



GEORGE
SALTER
ACADEMY

Year 9 Options





Contents

Introduction to Key Stage 4 Curriculum	4
A note from the headteacher	5
Art and Design (GCSE).....	6a
Business Studies (GCSE)	6
Catering and Hospitality (WJEC Level 1/2)	7
Childrens Play, Learning and Development.....	8
Computer Science (GCSE).....	9
Dance (BTEC).....	10
Dance (GCSE)	11
Design and Technology (GCSE)	12
Design for Theatre, Flim and Television (GCSE).....	13
Drama (GCSE).....	14
Engineering Design.....	15
English Literature and Language (GCSE)	16
French (GCSE).....	17
Geography (GCSE)	18
Graphics (NCFE Level 2 Technical Award)	19
Health and Social Care (BTEC.....	20
History (GCSE)	21
Mathematics (GCSE).....	22
Music (GCSE)	23
Music Technology (RSL Level 2)	24
Physical Education (GCSE)	25
Religious Education – Short Course (GCSE).....	26
Religious Education (GCSE).....	27
Science – Trilogy (double science) (GCSE)	28
Science – Triple Award (GCSE)	29
Sociology (GCSE)	30
Sport (BTEC Technical Award)	31

Introduction to Key Stage 4 Curriculum

This booklet takes you through the Core Curriculum subjects (Maths, English, Science, PE and Short Course RE) which are mandatory, and other subjects to be chosen as you wish.

It is important that you enjoy learning. We want you to select courses that you find interesting, play to your strengths and develop your skills. You should consider carefully how these choices would affect your future at GSA and beyond. Many courses are also offered in our post-16 curriculum at A Level and Level 3.

There are two Key Stage 4 curriculum pathways; you will be guided onto one of these based on your academic performance in Key Stage 3 (Years 7, 8 and 9). Students who have provisionally been signposted to the Triple Science pathway will be informed before making their option choices. This pathway remains open to change depending upon performance in assessments in Year 9.

The different pathways are designed to give every student the best possible chance of success in KS4. All pathways allow access to the English Baccalaureate.

Triple Science Pathway

The Core Curriculum subjects Maths, English, Science, PE and RE will provide you with a broad and balanced subject base. If you choose this pathway, you will also study **GCSE French**.

In this pathway you will select to study the three separate sciences; **Biology, Chemistry and Physics** (triple science).

The next decision will be whether to study **Geography** or **History**. You can study both by selecting the other as an option.

The last decision will be one subject from the list available in this booklet.

Trilogy (double science) Science Pathway

If you are on this pathway, you will study Trilogy **Science** at GCSE. This counts as a double award and students will receive two separate GCSE grades. The Core Curriculum subjects Maths, English, Science, PE and RE will provide you with a broad and balanced subject base.

You will also have to decide between **Geography** and **History**. You can study both by selecting the other as an option.

You will then have three options to decide on from those listed in the booklet.

When considering your option choices choose subjects that you like and are good at. Think about how your choices will affect your future career. Try not to let the choices made by your friends influence yours.

Study the subject information that follows carefully and be sure to understand what you are taking on. Discuss your options with your parents/carers and teachers to make sure you are making the right decisions. You and your parents/carers can request an interview to finalise your choices if necessary. Once you have made your final choices complete the option form and return to your form tutor.

Whilst the Academy endeavours to provide all students with their first choice of options, this is not always possible for a number of reasons including, staffing constraints and demand for subjects. For this reason, we request that students make a reserve choice.





A note from the principal

Dear student,

This booklet has been created to help you choose courses you will enjoy studying, subjects that will help you achieve your potential and realise your dreams for the future.

In Key Stage 4 all students will follow a course of study in the core subjects of Maths, English, Science, PE, RE and PSHE. PSHE and core active PE are non-examined courses.

Our GSA curriculum is relevant, broad and balanced. We will do our very best to ensure that your option courses are enjoyable, purposeful and designed to make sure that you achieve your potential. Your teachers will challenge you to attain the very best standards and will support you every step of the way.

All of our Key Stage 4 choices are worthwhile, leading to qualifications of real merit. Whatever course you choose will involve additional work outside of the classroom. Given 100% effort you will do well and achieve highly. Regular attendance is crucial to your success. Research has shown that if attendance is less than 95% you are likely to miss the high grades that you are capable of and will struggle to complete all the course requirements.

You will grow as a student as you complete your Key Stage 4 courses. You will become better organised, more independent, talk at length with greater confidence and much more. Please remember to nurture good study skills and discuss your work with your parents who need to offer just as much support the older you get as they did when you first started school.

We want you to enjoy learning and choose courses that match your experience, interest and ambitions. I urge you to think carefully about your options and discuss them with parents, family and teachers.

I hope that you appreciate the wide variety of options available and will choose wisely.

Mr A Price
Principal



Art and Design (GSCE)

Is this course for you?

The creative arts sector is one of the fastest growing in the UK economy. Employers want staff who can demonstrate creativity in a range of ways– problem solving, thinking outside of the box, being imaginative visually, but also having high expectations and understanding of logistics– all skills we develop and cultivate in art.

Are you a creative student who is an independent thinker keen to explore and experiment with materials and try out ideas to create and make? If so, we are the subject area for you!

If you have a passion for creating, exploring and taking risks then consider what you could achieve within Visual Arts.

What will you be taught?

Media, materials and techniques that will be taught within each specialism;

Fine Art – Drawing, painting, printmaking, ceramics, cardboard construction and wire.

Photography – Aperture, depth of field, exploring the possibilities and power of Photoshop, darkroom photography, physical manipulation and image transfer.

Textiles - Machine stitching, reverse applique, manipulating materials, digital textiles, batik pattern, printmaking in textiles, free hand stitching. Through this process students will be able to identify and work with the strengths they have discovered through learning and apply to their personal projects.

3D Design – ceramics, cardboard construction, wire sculpture, casting, manipulating plaster of Paris and how to create an installation.

How you will be assessed

Develop (AO1) - Develop ideas through investigations, demonstrating critical understanding of sources

Refine (AO2) - Refine work by exploring ideas, selecting and experimenting with appropriate media, materials, techniques and processes.

Record (AO3) - Record ideas, observations and insights relevant to intentions as work progresses.

Present (AO4) - Present a personal and meaningful response that realises intentions and demonstrates understanding of visual language.

Careers and further study

Architect, Advertising (Visual Communication), Animation, Desktop Publishing, Engraving, E book Cover Artist, Freelance Artist, Fashion Illustration, Graphic Design

Further information

For further information please contact Mrs L Shaw

Business Studies (AQA GCSE)

Is this course for you?

This is an optional course for students who have an interest in studying how businesses work. It enables them to develop independent thinking skills, solve problems and develop their confidence in decision making whilst understanding the dynamics of business activity and its influence on business processes and operations. The course involves a lot of extended writing and discussions so will require high literacy and communications skills.

What will you be taught?

The course will introduce students to issues concerning the setting up and operation of a business. It explores the activities of a business and the reasons for success or failure. It encourages students to appreciate that businesses must operate within a dynamic economic climate and society, which involves them engaging with a wide range of stakeholders who hold different perspectives.

Students will study the following areas in business;

Unit 1 – Business in the real world

Unit 4 – Human Resources

Unit 2 – Influences on business

Unit 5 – Marketing

Unit 3 – Operations

Unit 6 – Finance

How you will be assessed

100% written exam

Paper 1: Influences of Operations and HRM on Business Activity

1 hour 45 minutes = 90 marks (50% of GCSE)

Paper 2: Influences of Marketing and Finance on Business Activity

1 hour 45 minutes = 90 marks (50% of GCSE)

Both papers have the following format:

Section A = 20 marks, multiple choice and short answer questions

Section B = 34 marks, one case study/data response with a range of question types

Section C = 36 marks, one case study/data response with a range of question types (including a 12 mark question drawing on any area of the specification)

Careers and further study

A Levels – Accounting, Economics, Business, Law

BTEC Nationals L3 Extended Certificate in Business – Requires good organisation, literacy and numeracy, as well as communication skills

University – Various degree courses especially Finance, Accounting, Marketing, Economics, Human Resources, Facility Management, Hospitality and Sales.

Apprenticeship – Skills and knowledge to set up a business

Employment – Transferable skills means any profession is accessible which requires problem solving skills, working with a range of people, communications, presentation, numeracy and literacy skills

Further information

For further information please contact Mrs S Butt, Head of Business.



Catering and Hospitality (WJEC Level 1/2)

Is this course for you?

This course is perfect for students who like to learn in a more practical way. We expect our students to be creative, independent and to enjoy cooking, eating and learning about all things food related. If you enjoyed Food at KS3 and you have a good attitude then this course is for you!

What will you be taught?

In Unit 1 you will learn about the hospitality and catering industry and investigate what it takes to run a successful business within the hospitality sector.

In Unit 2 you will learn all about nutrition. You will build on knowledge already gained at Key Stage 3 and study how humans can maintain a healthy lifestyle, this is not just limited to food. You will learn how we can lead more sustainable lives through the food we eat. You will also develop your practical cookery skills.

How you will be assessed

40% Theory Exam (1 hour 30 minutes paper)

You will sit this at the end of Year 10 and will have an option to resit at the end of Year 11 if needed.

30% Written Coursework

This is a response to a brief where you research a target audience, select a suitable meal and plan, prepare and evaluate your chosen meal.

30% Practical Assessment

You will plan, prepare and cook a two-course meal showcasing the skills you have developed during your food journey.

Careers and further study

Sports Nutritionist, Dietician, Food Scientist, Product Developer, Food Engineer, Nutritional Therapist, Food Safety Officer, Food Business Owner, Food Blogger, Food Journalist, Food Teacher.

Further information

For further information please contact Mr S Hayes.



Children's Play, Learning and Development

Is this course for you?

On this course you will study how children develop up to the age of 8 years old. You will also study how children play – the different types of play – and how they learn basic skills, knowledge and develop understanding through this play.

The final area of learning examines inclusive education and how early years settings can ensure all children and their families feel safe, welcome and can achieve their full potential.

What will you be taught?

Unit 1: Patterns of Child Development. This unit aims to develop your knowledge and understanding of child development. You will learn about five different areas of development – physical, cognitive, communication and language, emotional and social – and how these areas are linked. You will investigate how adults in early years settings can support children's development.

Unit 2: Promoting Children's Development Through Play. During this unit, you will learn how play promotes children's development in early years settings. You will also examine how different play opportunities promote children's development and how play is structured in early years settings to promote children's development.

Unit 3: The Principles of Early Years Practice. In this unit, you will examine the importance of inclusive practice in early years and explore ways in which early years settings implement inclusive practice. You will also investigate how children are empowered in early years settings and develop an understanding of the importance of the key person approach in supporting children's development.

How you will be assessed

There is one external exam based on the content covered in unit 1. This exam comprises of mostly multiple choice short answer questions. Units 2 and 3 are coursework units where you will be required to show your knowledge and understanding of the content through a number of assignments at different levels of difficulty and complexity (from pass to distinction level).

Careers and further study

BTEC First award can be a great introduction for the Level 3 BTEC in Children's Play, Learning and Development, which you can study in Post-16 or college. It can act as a good foundation for work opportunities in the education early years sector such as in nurseries and primary schools. It can also support sports coaching or any work with children under the age of 8 years.

Further information

For further information please contact Mrs Wall or Ms Kaur.

Computer Science (OCR GCSE)

Is this course for you?

Are you a logical thinker? Do you have a genuine interest in computers and computer programming? This course gives you a real, in-depth understanding of how computer technology works and what goes on “under the lid”. You will need to think creatively, innovatively and logically to design and program solutions to real-world problems.

To do well on this course, you will need to have a high target level in mathematics and be good at problem solving. You will be expected to sit an aptitude test to determine whether the course is suited to you as a learner.

What will you be taught?

The course is designed to challenge your approach to software and technology from a new perspective; with an appreciation and understanding of how common apps and programs have been created. It will provide you with a broad knowledge of the hardware devices used and how they function.

In the theory element, you will investigate the components that make up digital systems and how they communicate with one another and with other systems, you will also gain an understanding of the impact digital technology has on an individual and the wider society.

You will develop your problem solving and critical thinking skills through programming solutions to problems gaining a good insight into computer technology, while developing your knowledge in mathematics, science and technology.

How you will be assessed

You will be assessed at the end of this course with two exams:

Unit 1 – Computer Systems; 50% Paper-Based Examination

A 90-minute written paper examining your knowledge of computer systems. Questions covering the physical elements of computer science such as computer hardware, networks, system security and software. The paper also covers social, legal and environmental effects of computer systems.

Unit 2 – Computational Thinking; 50% Paper-Based Examination

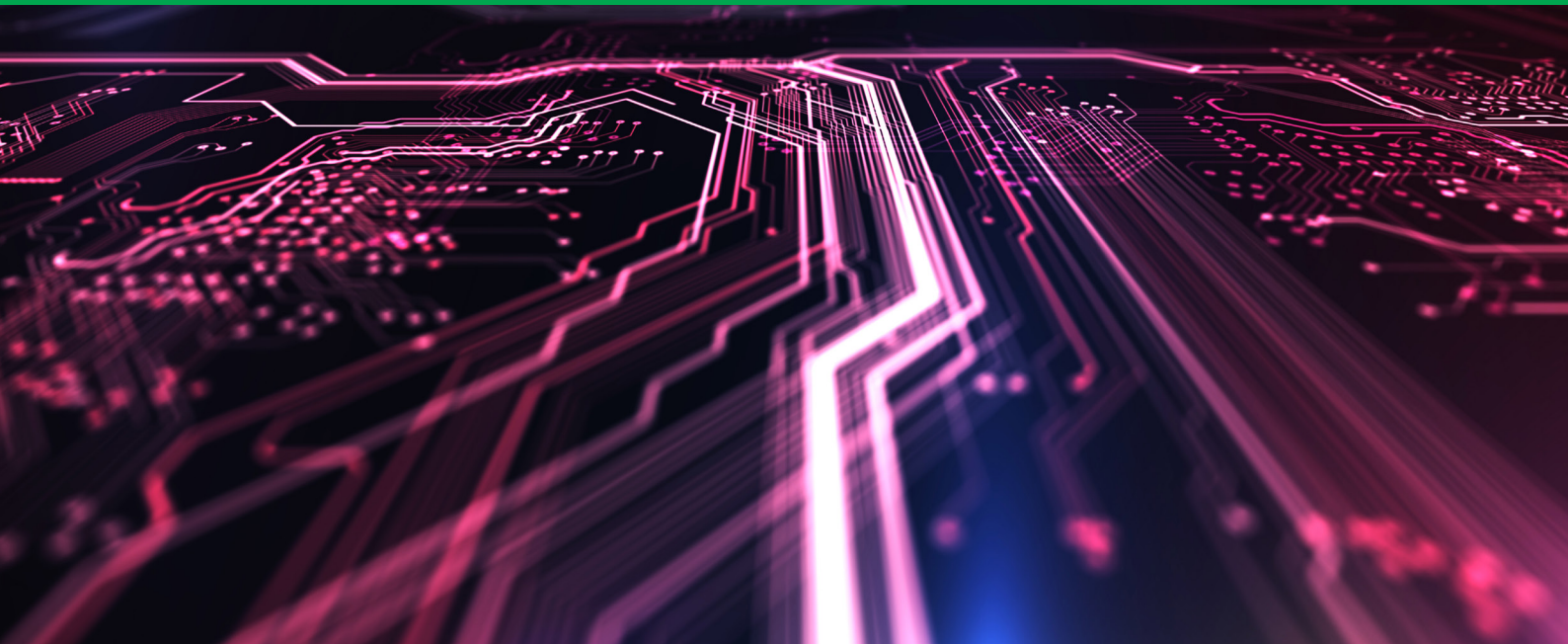
A 90-minute written paper examining your knowledge of program design and creation. The paper covers data representations in computer systems, logical problem solving and high and low level programming.

Careers and further study

Computational thinking has been a major tool in countries’ economic success. The course provides preparation for higher study and employment in the field of computer science. The increasing importance of information technology means there will be a growing demand for professionals who are qualified in this area. Students who have taken a GCSE in Computer Science and who progress to study at A Level or university will have an advantage over their colleagues who are picking up the subject at these levels.

Further information

For further information please contact Miss I Bains.



Dance (BTEC)

Is this course for you?

The study of Dance at Key Stage 4 is an exciting and creative option choice. BTEC Dance contributes to students' aesthetic and social development as well as promoting fitness and well-being. Students will develop their confidence and self-esteem through group work and performances. Experiencing a range of dance styles through workshops with professional practitioners and watching live works at the theatre will support students in becoming well rounded and versatile choreographers and performers. If students want a career in the dance industry, this is the qualification for them!

What will you be taught?

You will complete three mandatory units:

Component 1: Exploring the Performing Arts

This unit focuses on observing and reproducing existing professional dance works and exploring practitioners' creative intentions and processes.

Component 2: Developing skills and techniques

In this unit, you will learn how to develop your technical and performance skills by learning a piece of professional dance repertoire.

Component 3: Performing to a brief

This is an externally assessed unit where you create a performance piece to fit a set brief. You will review the choreographic process and evaluate your progress.

How you will be assessed

For the Tech Award in BTEC Dance, two units are internally assessed through live performances and written coursework (Component 1: Exploring the Performing Arts and Component 2: Developing skills and techniques). Coursework evidence may include: written reports, project plans, audio-visual recordings, working logbooks and presentations.

One unit is externally assessed through a video recording of your choreography and a controlled written assessment (Component 3: Performing to a brief).

Careers and further study

There are courses available in higher and further education, which will allow you to progress onto university and a career in the performing arts industry. There are a variety of careers in the dance industry which include: artistic director, choreographer, dance journalist, community dance artist, dance performer, press and public relations, dance therapist, dance producer, production manager, rehearsal director, youth worker, dance photographer, dance teacher.

Further information

For further information please contact Miss A Ashmore.

Dance (GCSE)

Is this course for you?

The study of Dance as an art form contributes to students' aesthetic and social development as well as promoting fitness and well-being. As performers, students will develop confidence and self-esteem, as well as sensitivity to others and team working skills. As choreographers, students will employ the skills of problem solving and creativity and through directing others, students will develop their interpersonal and communication skills. If students want to develop their creativity, imagination and physical and intellectual capacities, then this is the qualification for them!

What will you be taught?

This course will enable students to develop skills, knowledge and understanding of a choreographer, performer and critic through two components:

Component 1: Performance and Choreography (60% of GCSE)

- Set phrases through a solo performance (approximately 1 minute in duration)
- Duet/trio performance (three and a half minutes in duration) – 30% of GCSE
- Choreography (solo or group choreography) – 30% of GCSE

Component 2: Dance Appreciation (40% of GCSE)

Students will develop their ability to analyse, evaluate and appreciate eight short professional dance works, as well as their own experiences.

What's assessed?

- Knowledge and understanding of choreographic processes and performing skills
- Critical appreciation of own work
- Critical appreciation of professional works
- Written exam: 1 hour 30 minutes

How you will be assessed

60% of the assessment is practical non-exam assessment, which will be assessed in school and externally moderated by AQA.

Component 1: Performance and Choreography:

Performance – Students must perform a solo of set phrases and in a duet/trio in any dance style.

Choreography – Students must choreograph their own dance (solo or group) in response to an externally set task list.

Component 2: Dance Appreciation:

Students will study eight short professional works, which are choreographed by established and new choreographers. Works will cover a range of styles and style fusions including: ballet, urban, contemporary, dances from other cultures.

Careers and further study

There are courses available in higher and further education which will allow you to progress onto university and a career in the performing arts Industry.

There are a variety of careers in the dance industry which include: artistic director, choreographer, dance journalist, community dance artist, dance performer, press and public relations, dance therapist, dance producer, production manager, rehearsal director, youth worker, dance photographer, dance teacher

Further information

For further information please contact Miss A Ashmore.

Design and Technology (GCSE)

Is this course for you?

The GCSE in Design and Technology enables students to understand and apply iterative design processes through which they explore, create and evaluate a range of outcomes. The qualification enables students to use creativity and imagination to design and make prototypes (together with evidence of modelling to develop and prove product concept and function) that solve real and relevant problems, considering their own and others' needs, wants and values. It gives students opportunities to apply knowledge from other disciplines, including Mathematics, Science, Art and Design, Computing and Humanities.

What will you be taught?

Core knowledge: The core content provides students with a breadth of study and the material categories provide students with a depth of study. All students study the core content plus at least one material category.

- New and emerging technologies
- Informing design decisions
- Energy, materials, devices and systems
- Materials types, properties and structure
- Designing principles
- Materials such as timbers, metals, papers and boards, polymers, systems and textiles

How you will be assessed

Component 1: Written examination, 1 hour and 45 minutes, 100 marks (50%).

Section A: Core - 40 marks - mixture of different question styles, including open-response, graphical, calculation and extended-open-response questions. 10 marks are calculation questions.

Section B: Material categories - 60 marks - mixture of different question styles, including open-response, graphical, calculation and extended open-response questions. 5 marks are calculation questions.

Component 2: Non-examined assessment, 100 marks (50%)

Investigating, designing, making and evaluating a prototype of a product. Students will undertake a project that requires them to follow an iterative design process rather than a linear process requiring them to continually test, evaluate and refine ideas.

- Investigate (16 marks)
- Design (42 marks)
- Make (36 marks)
- Evaluate (6 marks)

Careers and further study

If you have a creative flair in designing and making products you may want to pursue the careers listed below. Some of these may require further study at A Level and beyond. Some students prefer to join as apprentices. Whatever pathway you chose you could have an interesting future career in: architecture, interior design, product design, vehicle design, furniture, jewellery, engineering and much more. Sound interesting? Then this could be the best choice for you.

Further study options include GCE Product Design (A Level), Apprenticeships in Engineering (Levels 2 & 3), Cambridge Technical in Engineering.

Further information

For further information please contact Miss Raven.

Design for Theatre, Film and Television (3D design) (GCSE)

Is this course for you?

Develop and create set, prop, and costume designs for theatre, film and television using traditional and non-traditional media. When designing for theatre, film and television you will research and create designs, prototyping and modelling or making of primarily functional and aesthetic products, objects, and environments, drawing upon intellectual, creative and practical skills. You will use of a range of design materials, tools and techniques such as digital and non-digital design methods, graphic and construction materials.

What will you be taught?

Design for theatre, film and television focuses on the designing, prototyping, modelling or making of functional and aesthetic consumer products, interiors and architecture.

Throughout this course you will study:

- Design and production processes in different industries individually, in a team or as a freelance practitioner.
- Materials and construction techniques creating models and working drawings to help take initial ideas through to realisation.
- Responsibility for a particular aspect of the design or production process or for the entire design cycle.
- Develop excellent communication skills in order to liaise with clients and to promote yourself as a designer.

Develop transferable skills:

- Apply a creative approach to problem solving.
- Consider and develop original ideas from initiation to realisation.
- Critically analyse your own work and the work of others.
- Express individual thoughts and choices confidently.
- Take risks, experiment and learn from mistakes.
- Develop and explore ideas.
- Research primary and contextual sources.
- Experiment with media, materials, techniques and processes.

How you will be assessed

Component 1: Portfolio – 60% of GCSE

A portfolio that in total shows explicit coverage of the four assessment objectives. It must include a sustained project evidencing the journey from initial engagement to the realisation of intentions and a selection of further work undertaken during the student's course of study. Non-exam assessment (NEA) set and marked by the school/college and moderated by AQA during a visit.

Component 2: Externally set assignment – 40% of GCSE

Students respond to their chosen starting point from an externally set assignment paper relating to their subject title, evidencing coverage of all four assessment objectives. Non-exam assessment (NEA) set by AQA; marked by the school/college and moderated by AQA during a visit. Moderation will normally take place in June.

Careers and further study

This qualification prepares you for entering many creative and design based industries as well as theatre, film and television. A perfect starting point for entering industry, undertaking apprenticeships or further study in numerous different courses such as:

- A Level Drama and Theatre – Understanding and designing theatre sets
- A Level Product Design
- BTEC in Technical Theatre sound, light and stage
- BTEC Production Arts
- BTEC Stage Design for Performance

Further information

For further information please contact Miss A Ashmore.



Drama (GCSE)

Is this course for you?

GCSE Drama provides you with a creative pathway into the roles of an actor, director and designer. This fascinating course will allow you to explore the processes and performances behind both devised and scripted performances. It will also appeal to you, if you enjoy sharing your opinions on streamed/live theatre performances in the same way that a theatre critic might do. Collaboration is at the heart of this course and is ideal for any young person who excels working with and learning from others.

What will you be taught?

You will be taught how to respond to a range of dramatic stimuli and create an original piece of devised performance. Alongside creating your own work, you will be introduced to a range of scripted plays that will allow you to understand the creative intentions behind the writing, staging and design choices made when bringing a play to the stage. Much of the course will encourage you to gain an understanding of how to shape, prepare and share your work in front of a live audience.

How you will be assessed

You will be assessed as follows:

Component 1: Devising (40%)

Practical performance and coursework portfolio, internally assessed.

Component 2: Performance from text (20%)

Two scripted performances of a monologue, duologue or group piece, externally assessed.

Component 3: Theatre makers in practice (40%)

Written exam; section A – DNA (a dark comedy by Dennis Kelly) and section B live theatre evaluation, externally assessed.

Careers and further study

Studying this course could lead to careers in acting, directing, stage management, media, theatre designer, drama teaching, drama therapist and any other career that involves a high level of personal and social interaction with others.

Further information

For further information please contact Miss J Clark.

Engineering Design

Is this course for you?

Engineering design is a process used to identify market opportunities and solve problems, contributing to the development of new products and systems. This qualification is aimed at learners who wish to study the processes involved in designing new engineered products and the requirements of a design specification. Through research and practical activities, learners will understand how market requirements and opportunities inform client briefs and will use practical skills such as drawing, computer modelling and model making to communicate design ideas.

What will you be taught?

- Requirements of design briefs and specifications for the development of new products and how consumer requirements and market opportunities inform these briefs.
- Understanding of the design cycle, the requirements for a design brief and design specification, and the importance of research data in developing a design solution.
- Effective product analysis through both research and practical experience of product assembly and disassembly procedures.
- Understanding and appreciation of manufacturing processes, design features, materials used and the principles behind good design.
- Communicating 2D and 3D design ideas, including effective annotation and labelling.
- Detailed hand drawing and rendering as well as computer-based presentation techniques and computer-aided design (CAD) software.
- Produce a model prototype and test design ideas in a practical context.
- Evaluate the prototype against the product specification and consider potential improvements to features, function, materials, aesthetics and ergonomics in the final product.

How you will be assessed

The course is taught holistically and assessed through 4 equally weighted assignments:

Unit R105: Design briefs, design specifications and user requirements (25%)

Written exam paper – 60 marks, 60 minutes, externally assessed.

Unit R106: Product analysis and research (25%)

10 – 12 hour disassembly project – 60 marks, internally assessed externally moderated

Unit R107: Developing and presenting engineering designs (25%)

10 – 12 hour design communication project – 60 marks, internally assessed externally moderated

Unit R108: 3D design realisation (25%)

10 – 12 hour practical engineering project – 60 marks, internally assessed externally moderated

Careers and further study

- Multitude of careers within engineering and product design, construction, architecture etc.
- Apprenticeships in engineering (Levels 2 and 3)
- GCE Engineering Product Design (Level 3)
- GCE Product Design (A Level)

Further information

For further information please contact Miss Raven.

English Language and Literature (GCSE)

Is this course for you?

English is a compulsory Key Stage 4 subject and you will study for two GCSE qualifications. The courses will develop your reading, writing and spoken language skills, as well as allowing you to become a confident and sophisticated communicator. The English curriculum aims to empower and prepare you for life beyond school, providing you with the skills necessary to succeed in further education and employment.

What will you be taught?

In **English Literature**, you will enjoy studying excellent texts such as Shakespeare's *Macbeth*, Russell's *Blood Brothers*, a 19th century novel such as Dickens' *A Christmas Carol* and an anthology of poetry relating to the themes of power and conflict. The texts allow you to engage with the concepts of the human condition, the idea that methods have meaning and that texts can be read critically and in light of certain contextual factors.

In **English Language**, you will study both fiction and non-fiction texts and develop the skills needed to write creatively and to express a viewpoint. You will engage with a range of different extracts, genres and forms and use these examples to create your own style of writing. Your English Literature study helps to develop your English Language skills.

How you will be assessed

In-class and mock assessments allow students to practise responding to exam questions in timed, silent conditions. Both English Literature and Language are assessed through formal exams at the end of study.

English Literature:

- Paper 1: Shakespeare and the 19th Century Novel (40%)
- Paper 2: Modern text and poetry – anthology and unseen (60%)

English Language:

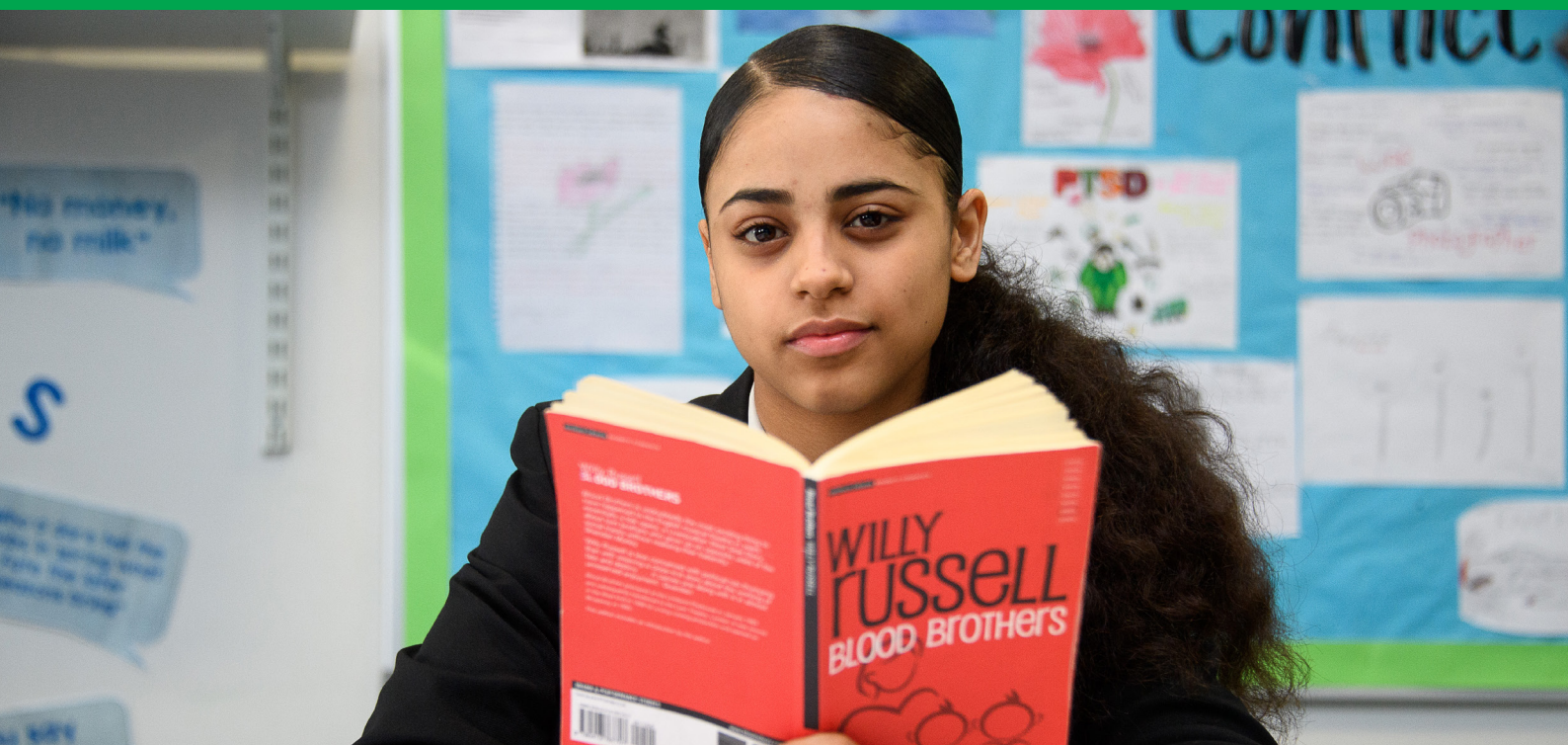
- Paper 1: Explorations in Creative Reading and Writing (50%)
- Paper 2: Writers' Viewpoints and Perspectives (50%)
- Spoken Language (unweighted, teacher assessed, pass/ merit/ distinction)

Careers and further study

English qualifications support all future career and education options due to the transferrable communication skills developed. Further study options at GSA are A Level English Literature and A Level Film Studies. Popular career pathways include Education, Law, Marketing and Journalism.

Further information

For further information please contact Mrs G Duncan.



French (GCSE)

Is this course for you?

You will learn to develop a variety of skills that are essential and transferable in everyday life; communication, cultural awareness, pattern recognition, linguistic inference and global awareness are but a few. If you are interested in travel or life and work abroad, it will help form a foundation for your language acquisition and broaden your appreciation of cultural variety.

What will you be taught?

The GCSE French course has been designed to cover a breadth of topical issues and provide students with the linguistic skills and social awareness to make them more capable learners and contributors to the wider world.

The themes covered will be:

- Identity and culture (family, marriage, friendship social media, mobile technology, film, food and eating out, sport and festivals).
- Local, national, international and global areas of interest (home and local area, charity work, healthy living, the environment, poverty and travel).
- Current and future study and employment (life at school, further study and careers).

How you will be assessed

This course is 100% linear with terminal exams. The exams are split across the four skills:

- Listening and responding (25%)
- Reading and responding (25%)
- Speaking (25%)
- Writing (25%)

Students will be entered for either Foundation or Higher tier and this decision will be based upon the progress of each individual student over the course of the 3 years, in order to maximise their final grade.

Careers and further study

Your ability to speak a foreign language will help you land a job and get preference over other monolingual candidates. Knowing a second language boosts your chances amongst a group of other candidates with similar abilities.

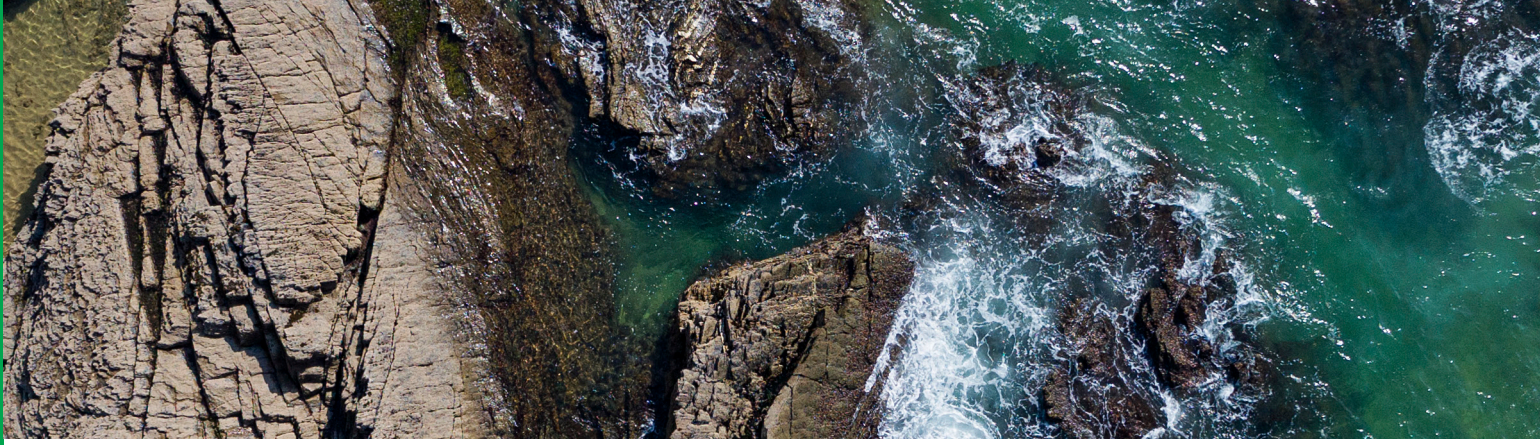
Your excellent communication skills will open up many career pathways; you are not just limited to being a French teacher.

Further study options include:

- French (A Level)
- French Studies (Degree)
- Linguistics (Degree)

Further information

For further information please contact Mrs J Brown.



Geography (GCSE)

Is this course for you?

GCSE Geography is an extremely popular course at the academy and achieves excellent results. The course builds upon the skills gained at KS3 and allows you to:

- Develop and extend your knowledge of locations, places, environments and processes.
- Gain an understanding of the interactions between people and environments, changes in places and processes over space and time, and the interrelationship between geographical phenomena.
- Develop and extend your competence in a range of skills including those used in fieldwork.
- Apply geographical knowledge, understanding, skills and approaches appropriately and creatively to real world contexts.

What will you be taught?

Topics taught through the course include:

- The challenge of natural hazards (tectonic and weather hazards)
- The living world (ecosystems)
- Physical landscapes in the UK (coastal and river landscapes)
- Urban issues and challenges (population and settlement)
- The changing economic world (development)
- The challenge of resources management (water and waste)

How you will be assessed

Students will be assessed through three external examinations:

- Paper 1: Living with the physical environment; 35% of GCSE
- Paper 2: Challenges in the human environment; 35% of GCSE
- Paper 3: Geographical application; 30% of GCSE

Careers and further study

Geography is an entry point to many careers, for example: town and transport planning, chartered surveying, land and water management, sustainability, environmental consultancy, development, tourism, conservation, demography, housing and social welfare. The majority of geographers choose careers which make use of their transferable skills. These include information technology, administration and management, the financial sector, marketing, research, and industry and manufacturing.

Further information

For further information please contact Mr Elgar or Miss Ullah.

Graphics (NCFE Level 2 Technical Award)

Is this course for you?

Graphic design is a form of visual communication. It is a process by which visual information is given form and structure, to communicate a message. Being a graphic designer is the profession of visual communication that combines images, words and ideas to convey information to an audience. It involves designing print or electronic forms of visual information for advertisement, publication or website. This qualification focuses on an applied study of the graphic design sector and learners will gain a broad understanding and knowledge of working in the sector.

What will you be taught?

Throughout this qualification, learners:

- Identify and experiment with graphic design components, exploring the visual impact that graphic design can create.
- Learn about graphic designers, their work and working in the industry. Learners will explore various graphic design disciplines such as illustration, branding and advertisement.
- Work to graphic design briefs, refining and selecting ideas
- Form a graphic design portfolio and explore creative direction. Learners will explore graphic design in the Wider World such as fashion, film, advertising and how to promote themselves as graphic designers.

How you will be assessed

The NCFE Graphic Design course has split weighting. 50% of the course comprises of an internally assessed portfolio of work covering units 1-3. The remaining 50% of the course is an externally assessed task-based exam (unit 4) whereby learners apply the knowledge and skills gained in units 1-3.

- Unit 1 – Introduction to graphic design. Visual portfolio in any format including evidence of experiments, reports and design sheets.
- Unit 2 – Graphic design practice.
- Unit 3 – Responding to a graphic design brief.
- Unit 4 – Graphic design portfolio.

Careers and further study

If you have a creative flair in designing and making products you may want to pursue the careers listed below. Some of these may require further study at A Level and beyond. Whatever pathway you chose you could have an interesting future career in: architecture, interior design, illustration, fashion design, marketing, film and TV and much more. Sound interesting? Then this could be the best choice for you.

Further study options include:

- Product Design (A Level)
- Graphic Design (A Level)
- Art Textiles (A Level)

Further information

For further information please contact Miss Raven.



Health and Social Care (BTEC)

Is this course for you?

This is a course where you learn about life and what happens to you. We examine 6 life stages, from birth to old age and the physical, intellectual, emotional and social developments that impact each and every one of us. It also covers professionals who work in the care sector, their roles and responsibilities.

What will you be taught?

Component 1: Explore

You will explore how individuals develop in different areas (physical, intellectual, emotional and social) and how they adapt when faced with different circumstances and environments.

Component 2: Develop

You will develop knowledge and understanding of the care sector and the application of the care values, and the responsibilities carers have to the people they care for.

Component 3: Apply

You will pull together all you have learned in previous components and apply your knowledge in real life scenarios.

How you will be assessed

BTEC level 1/2 Tech Award has 3 areas for assessment.

Components 1 and 2 are coursework elements where you will study theory and write a series of assignments of graduated degree of difficulty depending on the grade you are aiming for (pass, merit or distinction).

Component 3 is an exam based assessment which you will complete in Year 11.

Careers and further study

BTEC Tech award can be a great introduction for the Level 3 BTEC in Health and Social Care, which you can study at post-16 or college. It can act as a good foundation for work opportunities in the care sector such as nursing, early years teaching within care homes and/or hospitals.

Further information

For further information please contact Mrs Wall or Ms Kaur.

History (GCSE)

Is this course for you?

The right decision changes everything. Learning from the past can benefit your future as history helps you to understand the world around you. This course is suitable for students who have a desire to learn about the past, enjoy a challenge and wish to develop as critical thinkers. History provides you with skills employers value, for example: how to understand and critically evaluate information, presentation skills, research skills and the ability to debate. Don't just learn history, learn *from* history!

What will you be taught?

In history you will be taught about 4 different topics that allow you to explore the past in different ways.

Weimar and Nazi Germany, 1918-1939

This module covers Germany in crisis and revolution, the rise of the Nazis and how the Nazis changed Germany.

Elizabethan England, 1558-1588

This module explores the challenges Elizabeth I faced in religion, politics, foreign policy and how she became one of England's greatest monarchs.

The American West, 1835-1895

The American West covers the lives of Native Americans and their wars as well as the settlers who faced troubles trying to push west.

Medicine through Time

This module explores developments in medicine in terms of surgery, public health and what caused illness. This also includes a special study on medicine in WW1.

How you will be assessed

The History GCSE is assessed by 3 examinations in Year 11.

30% is the Thematic Study (1 hour 15 minutes)

This tests your knowledge of Medicine through Time through questions based on sources you're your own knowledge.

40% is the Period Study and Depth Study (1 hour 45 minutes)

This tests your knowledge and understanding of The American West and Elizabeth I through a variety of questions asking you to describe and explain.

30% is the Modern Depth Study (1 hour 20 minutes)

This tests your ability to explain sources and historians' interpretations regarding the topic of Weimar and Nazi Germany.

Careers and further study

History is a well-respected academic subject which is highly favoured by employers and further education institutions due to the skills that are developed in students who study it. History can lead to a variety of careers in different areas such as government, law and media. You could become a lawyer, banker, museum curator, civil servant, teacher, journalist, TV presenter, author, publisher, business person... the list goes on!

Further information

For further information please contact Mr Wölfel.



Mathematics (GCSE)

Is this course for you?

Mathematics is a compulsory subject in Key Stage 4. Students will build upon the foundations of the Key Stage 3 national curriculum.

What will you be taught?

The subject content of our curriculum matches that set out in the Department for Education's Mathematics GCSE subject content and assessment objectives document. This content is common to all exam boards.

The content has been organised into broad topic areas:

- Number
- Algebra
- Ratio, proportion and rates of change

How you will be assessed

GCSE Mathematics has a Foundation tier (grades 1-5) and a Higher tier (grades 4-9). Students must sit three examination papers, each from the same tier.

- **Paper 1:** Non calculator, 1 hour 30 minutes
- **Paper 2:** Calculator, 1 hour 30 minutes
- **Paper 3:** Calculator, 1 hour 30 minutes

A mix of question styles and mathematical problems are addressed across all three papers.

Careers and further study

Career options in mathematics are endless and include academic research, actuary work, logistics and accountancy. The GCSE pathway will lead to A Level courses allowing access to degree level qualifications in mathematics, economics, accountancy, finance, physics and engineering.

Further information

For further information please contact Mr H Bhorjee.

Music (GCSE)

Is this course for you?

You will develop the three subject skills: performing, composing, and listening and appraising. This course is for you if you enjoy:

- Performing music and developing your skills (solo and group pieces)
- Creating your own music in a variety of styles
- Listening to and learning about a diverse range of music (1700 to the present day)

What will you be taught?

You will be taught the performing and compositional skills to submit work to the exam board

You will complete 4 areas of study including:

1. Instrumental Music (1700–1820) (Bach, Beethoven)
2. Vocal Music (Purcell, Queen)
3. Music for Stage and Screen (Wicked, Star Wars)
4. Fusions (Afro-Celt, Samba)

How you will be assessed

The course breaks down into the following weightings:

Performing Music (30%)

This is coursework which means that it is recorded and assessed in school and then sent to the exam board for moderation. You must submit 4 minutes' worth of music including one solo and one ensemble (group) piece.

Composing Music (30%)

This is also coursework. You will compose one composition in a style of your choice and one from a list sent by the exam board in Year 11 (e.g. a song, music to accompany the opening of a new building etc.). You can work on Logic, Sibelius, Bandlab, Yamaha keyboard or in the studio, on these pieces.

Listening and Appraising (40%)

This is a 90 minute listening exam paper where there are short-answer questions on the areas of study set works, a piece of music unprepared and an extended writing question comparing one of your studied works with an unseen one.

Careers and further study

Studying music develops many important transferable skills sought by universities and employers: working in a group or team, leadership skills, motivation/dedication/perseverance, creativity, communication skills, analytical and writing skills, personal development, confidence building, and presentation skills. Further study: A Level Music, RSL Level 3 Music Practitioners Course. Careers include: musician, sound engineer, composer, arts administrators, music therapy, music press/publisher, venue management etc.

Further information

For further information please contact Mrs K Daune.



Music Technology (RSL Level 2)

Is this course for you?

In this course you will learn how to use Logic Pro like never before. You will learn how to map your own beats, create music using advanced music tech skills, record musicians and produce. You will also learn about the history of popular music, including rap, rock, punk, electronica genres and more. If you love listening to and creating music, then this is the course for you.

What will you be taught?

Musical Knowledge Unit

This unit will explore the history of popular music from 1900 onwards and covers many different styles. You will learn not only about the characteristics of the music, but also about the context and culture of how that music began.

Music Sequencing Unit

For this unit you will learn how to write your own music in Logic. You will learn how to create your own loops, you will map drum beats, learn how to use sampling, plug-ins and how to mix your work. We explore many different genres, but for your final piece of work you can choose whatever style you want to do.

Music Recording Unit

In this unit you will learn how to record instruments and work with musicians. You learn about different microphones and how to use them, and how to use an interface and set levels.

How you will be assessed

Musical Knowledge

You will create 2 pieces of work that will either be written or you can record a vlog or blog.

Music Sequencing

This is externally assessed and consists of a controlled amount of time where you will create a piece of music in Logic.

Careers and further study

This course really helps you to develop the skills to write and record your own music. It could lead to you becoming a sound engineer in a music studio, a live sound engineer at a venue, or a producer. It also leads on well to taking an A Level in Music Technology.

Further information

For further information please contact Mrs K Daune.

Physical Education (GCSE)

Is this course for you?

The GCSE specification has key elements of theoretical knowledge, practical performance and analysis of performance. This is a fantastic option for those students interested in learning about the science behind sport and those who are keen to understand how we are able to perform the way that we do. Students also have the opportunity to demonstrate their practical talents across a number of activities.

What will you be taught?

There are a number of theory topics that will be covered throughout the GCSE course. These include:

- Applied anatomy and physiology
- Movement analysis
- Physical training
- Use of data
- Socio-cultural influences
- Health, fitness and well-being
- Sport psychology

There is a vast number of individual and team sports that can be assessed at GCSE level so there is something for everybody. On this course, students will be taught sports completed in the school curriculum and many others which can be completed off site where necessary e.g. rock climbing.

As well as the theory and practical assessments, students will also be taught how to analyse and evaluate performance by watching others, commenting on strengths and weaknesses, and suggesting ways to improve performance.

How you will be assessed

Theory (60% of overall mark):

Paper 1: The human body and movement in physical activity and sport (30%) 1 hour 15 minutes.

Paper 2: Socio-cultural influences and well-being in physical activity and Sport (30%) 1 hour 15 minutes.

Practical assessment (30% of overall mark)

3 practical assessments (1 team sport, 1 individual sport and 1 further sport, either team or individual). Each sport is 25 marks (75 marks in total).

Analysis and Evaluation (10% of overall mark)

Analysis (15 marks) and evaluation (10 marks) to bring about improvement in 1 chosen activity (25 marks in total). Can be in a written or verbal format.

Careers and further study

GCSE PE opens up a number of doors to further education and future careers. At GSA Sixth Form (Salter Sixth) we offer A Level PE as well as BTEC Sport Level 3 which all link nicely with GCSE PE. PE teachers will offer guidance on which course is most suited to you. If this is a subject you want to pursue as a career, all the options available to you at sixth form or college can prepare you for numerous sports degrees you could choose at university. The world of sport is vast, with hundreds of careers to choose from such as PE teacher, sports coach, match analyst, sports journalist and physiotherapist to name just a few.

Further information

For further information please contact Mrs A Hill.



Religious Education – short course (GCSE)

Is this course for you?

This course is a combination of the study of two religions and Philosophical and Ethical studies. You will explore beliefs and teachings from two religions. You will also explore two moral themes applying how religious and non-religious believers view these themes. If you enjoy debate and have strong opinions about the world and society then this is the course for you! If you like to grapple with life's big questions and love asking questions for yourself then opt for RE.

What will you be taught?

You will study:

Religious, Philosophical and Ethical Studies in the Modern World

Theme 1: Relationships.

Theme 2: Life and Death.

Study of Christianity

Candidates will study the beliefs and teachings of Christianity.

Study of a World Faith (Judaism)

Candidates will study the beliefs and teachings of Judaism.

How you will be assessed

Component 1: Religious, Philosophical and Ethical Studies in the Modern World

Written examination: 1 hour (50% of qualification).

Component 2: Study of Christianity

Written examination: 35 minutes (25% of qualification).

Component 3: Study of a World Faith (Judaism)

Written examination: 35 minutes (25% of qualification).

Careers and further study

Studying RE can lead to careers in social care, law, media, charity work, teaching, police, medicine, journalism.

Further information

For further information please contact Mrs L Hayes or Mrs L Hickman.

Religious Education (GCSE)

Is this course for you?

This course is a combination of the study of two religions and Philosophical and Ethical studies. You will explore beliefs, teachings and religious practices from two religions. You will also explore four moral themes applying how religious and non-religious believers view these themes. If you enjoy debate and have strong opinions about the world and society then this is the course for you! If you like to grapple with life's big questions and love asking questions for yourself then opt for RE.

What will you be taught?

You will study:

Religious, Philosophical and Ethical Studies in the Modern World

Theme 1: Relationships.

Theme 2: Life and Death.

Theme 3: Good and Evil.

Theme 4: Human Rights.

Study of Christianity

Candidates will study the beliefs, teachings and practices of Christianity.

Study of a World Faith (Judaism)

Candidates will study the beliefs, teachings and practices of Judaism.

How you will be assessed

Component 1: Religious, Philosophical and Ethical Studies in the Modern World

Written examination: 2 hours (50% of qualification).

Component 2: Study of Christianity

Written examination: 1 hour (25% of qualification).

Component 3: Study of a World Faith (Judaism)

Written examination: 1 hour: (25% of qualification).

Careers and further study

Studying RE can help lead to careers in social care, law, media, charity work, teaching, police, medicine, journalism.

Further information

For further information please contact Mrs L Hayes or Mrs L Hickman.



Science – Trilogy (double science) (GCSE)

Is this course for you?

All students will follow one of two pathways for Science:

- Trilogy (double Science) leading to 2 GCSEs in Science
- Triple Award Science (3 GCSEs) – as an option choice leading to 3 GCSEs biology, chemistry and physics

The trilogy (double science) course is aimed at all students. As well as providing students with nationally recognised, high quality qualifications, it provides a basis for further study of science.

What will you be taught?

Students study areas of science including the immune system, the effects of drugs and alcohol, atomic structure, the greenhouse effect, electricity, nuclear physics and forces. A portion of the course focuses on the practical application of scientific skills.

This course will be taught over 5 periods per week.

How you will be assessed

The GCSE examinations will all take place in the summer of Year 11.

Six written exams, two each in physics, chemistry and biology, each worth 70 marks and each taking 1 hour 15 minutes.

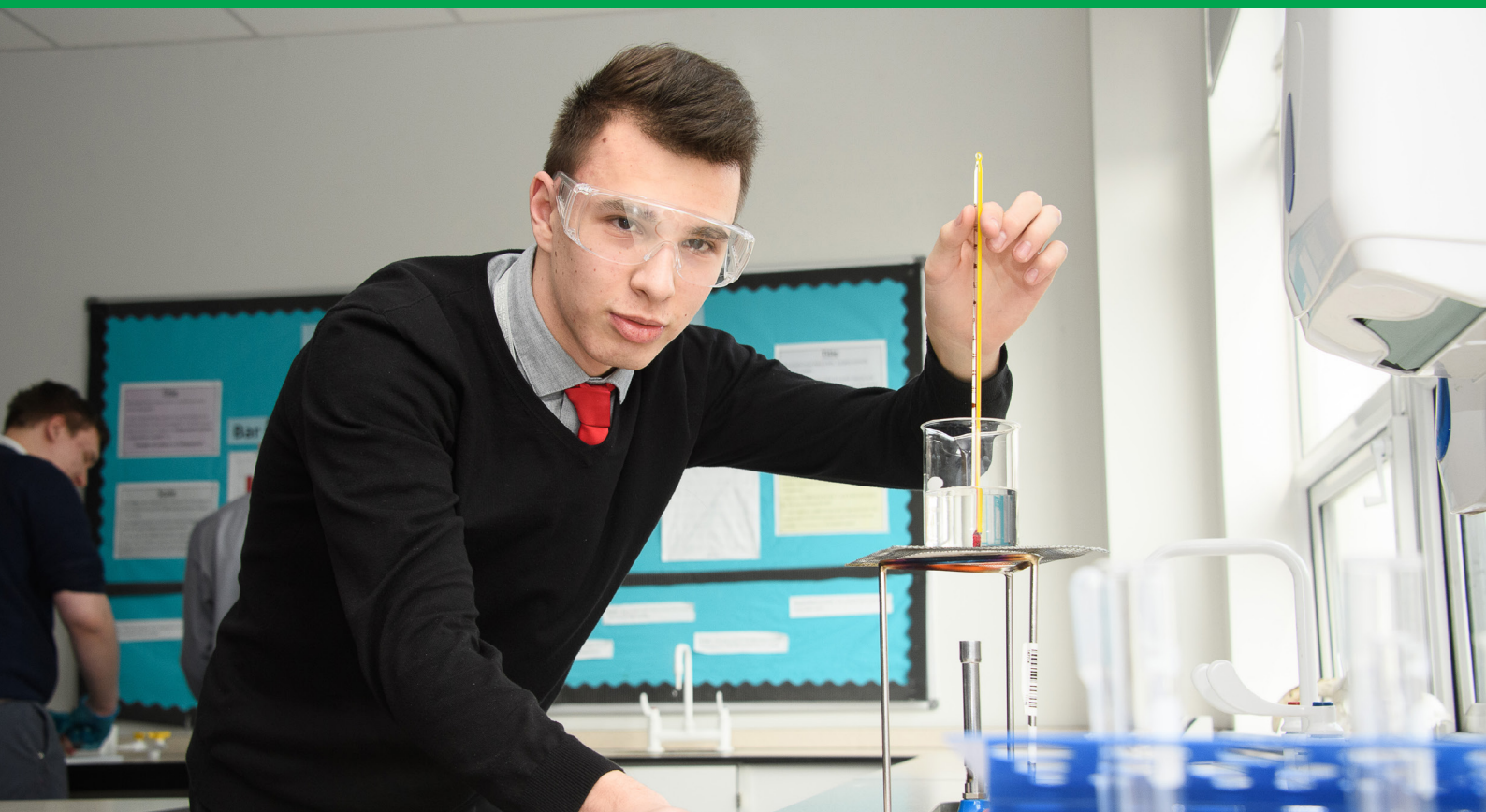
Careers and further study

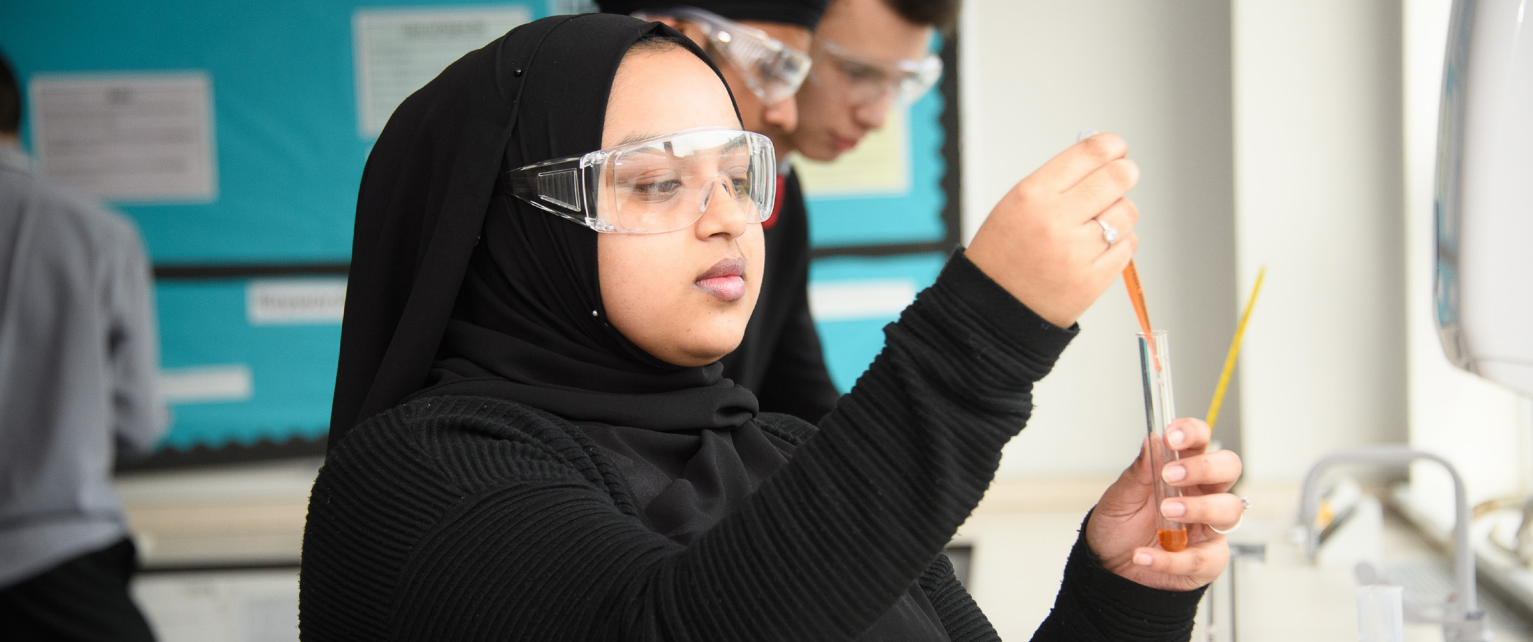
Following this course provides a good foundation for studying sciences post-16, in particular A Level in Biology, Chemistry or Physics. This provides a route for students considering a career in science e.g. as a doctor, physiotherapist, or engineer.

Science education develops a wide range of skills and opportunities that will prepare students for almost every career path. Apart from the obvious science based careers, you may be surprised to hear that the skills you gain from studying science will open up opportunities in areas that are not obviously science related, for example: finance, marketing, patent Law, photography, media and film production and food technology.

Further information

For further information please contact Mrs Mandair.





Science – Triple Award (GCSE)

Is this course for you?

Triple Science is suitable for students who enjoy Science and are interested in pursuing it in any form beyond GCSE.

All students will follow one of two pathways for Science:

- Trilogy (double science) leading to 2 GCSEs in Science
- Triple Award Science (3 GCSEs) - **as an option choice leading to 3 GCSEs biology, chemistry and physics**

Students can choose which pathway to follow. However, a student must be on track to achieve high grades at the end of Year 9 to study Triple Award Science.

What will you be taught?

Students choosing Triple Science as an option study three separate GCSEs, one in each science. The course covers the same areas as the double science GCSE but in more depth. In addition students will study a unit of space physics. This course is more demanding than the double science course and will be taught over 8 periods per week.

How you will be assessed

The GCSE examinations will all take place in the summer of Year 11. There will be six written exams, two each in physics, chemistry and biology, each worth 100 marks and each taking 105 minutes. Each exam is worth half of one GCSE, giving three GCSEs in separate sciences

Careers and further study

Studying individual sciences will allow you to go on and study a range of university courses, such as engineering, pharmaceuticals and environmental science. It goes without saying that these science GCSEs are very beneficial if you want to go on to study medicine, dentistry or veterinary science. However, studying triple science also stands you in good stead to use your analytical skills in careers such as accountancy and law.

Further information

For further information please contact Mrs Mandair.

Sociology (GCSE)

Is this course for you?

The course is designed to foster an understanding and critical awareness of the social world around us. You will be encouraged to explore and debate contemporary social issues to enable you to challenge assumptions and to question everyday understanding of social phenomena. You will develop your own sociological awareness through active engagement with the contemporary social world. You will need a high level of literacy skills in order to support the essay writing this course requires as well as the class discussions that take place.

What will you be taught?

Component 1 focuses on the themes of socialisation, identity and culture. You will study the key concepts and processes of cultural transmission, including socialisation and the acquisition of identity and develop these through the detailed study of families and education.

In Component 2 the focus is on social differentiation, power and stratification. This includes the theme of power, issues of social order and social control, studied through crime and deviance.

How you will be assessed

Component 1: Understanding Social Processes

Written examination: 1 hour 45 minutes (50% of the qualification)

Component 2: Understanding Social Structures

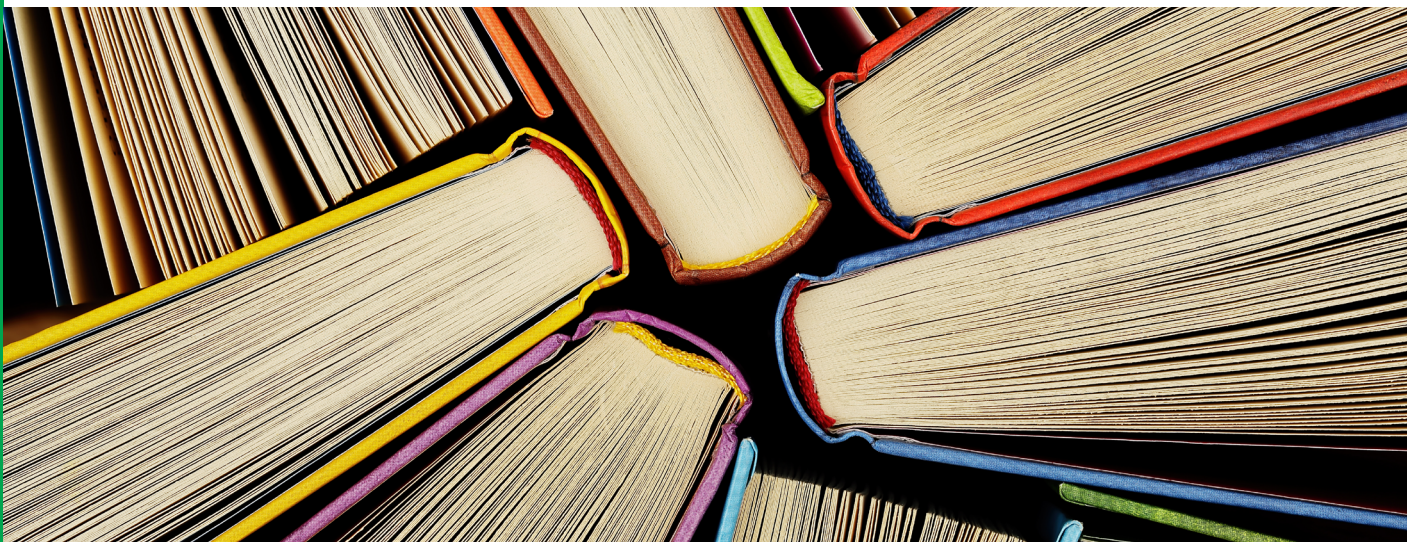
Written examination: 1 hour 45 minutes (50% of the qualification)

Careers and further study

The course provides a suitable foundation for the study of Sociology at either AS or A Level. The knowledge and understanding and skills developed through the study of GCSE Sociology will also provide a basis for further learning and career choices, e.g. law, journalism, economics, criminal justice work, teaching and social/youth work.

Further information

For further information please contact Mrs A Arif.



Sport (BTEC Tech Award)

Is this course for you?

If you are interested in further developing your knowledge linked to a range of sports and are suited to vocational learning then this is the course for you. This is a fantastic option for those students interested in learning about some of the key concepts of sport and looking to gain experience in putting these concepts into action. Your fitness, understanding of the human body and practical abilities will be measured as well as your ability to apply this knowledge to exam questions. This is the first year of this new and exciting specification.

What will you be taught?

Component 1: Preparing Participants to Take Part in Sport and Physical Activity

Students will explore the different types and provision of sport and physical activity available for different types of participants, barriers to participation and ways to overcome these barriers in order to increase participation in sport and physical activity. They will also research equipment and technological advances in a chosen sport or physical activity and how to prepare our bodies for participation in sport and physical activity.

Component 2: Taking Part and Improving Other Participants' Sporting Performance

Students will investigate the components of fitness and their effect on performance, take part in practical sport, explore the role of officials in sport and learn to apply methods and sporting drills to improve other participants' sporting performance.

Component 3: Developing Fitness to Improve Other Participants' Performance in Sport and Physical Activity

Students will be introduced to, and develop an understanding of, the importance of fitness and the different types of fitness for performance in sport and physical activity. They will also develop an understanding of the body and fitness testing.

How you will be assessed

Component 1: Preparing Participants to Take Part in Sport and Physical Activity

Assessed through a range of coursework tasks worth 60 marks in total. This unit is worth 30% of the course.

Component 2: Taking Part and Improving Other Participants' Sporting Performance

Assessed through a range of coursework tasks worth 60 marks in total. This unit is worth 30% of the course.

Component 3: Developing Fitness to Improve Other Participants' Performance in Sport and Physical Activity

Assessed via an external synoptic exam worth 60 marks in total. This unit is worth 40% of the course.

Careers and further study

Taken as part of a balanced curriculum, the successful completion of this course (BTEC Teach Award in Sport) opens up progression to A Levels or the study of a vocational qualification at Level 3, such as a BTEC National in Sport or a BTEC National in Sport and Exercise Science. If this is a subject you want to pursue as a career, all the options available to you at sixth form or college can prepare you for numerous sports degrees you could choose at university. The world of sport is vast, with hundreds of careers out there to choose from such as PE teacher, sports coach, match analyst, sports journalist and physiotherapist to name just a few.

Further information

For further information please contact Mrs A Hill.



GEORGE SALTER ACADEMY

George Salter Academy, Davey Road
West Bromwich, West Midlands, B70 9UW

Tel: +44 (0)121 553 4665

Email: info@georgesalter.com

Academy policies, including safeguarding,
are available on the website:

www.georgesalter.com

